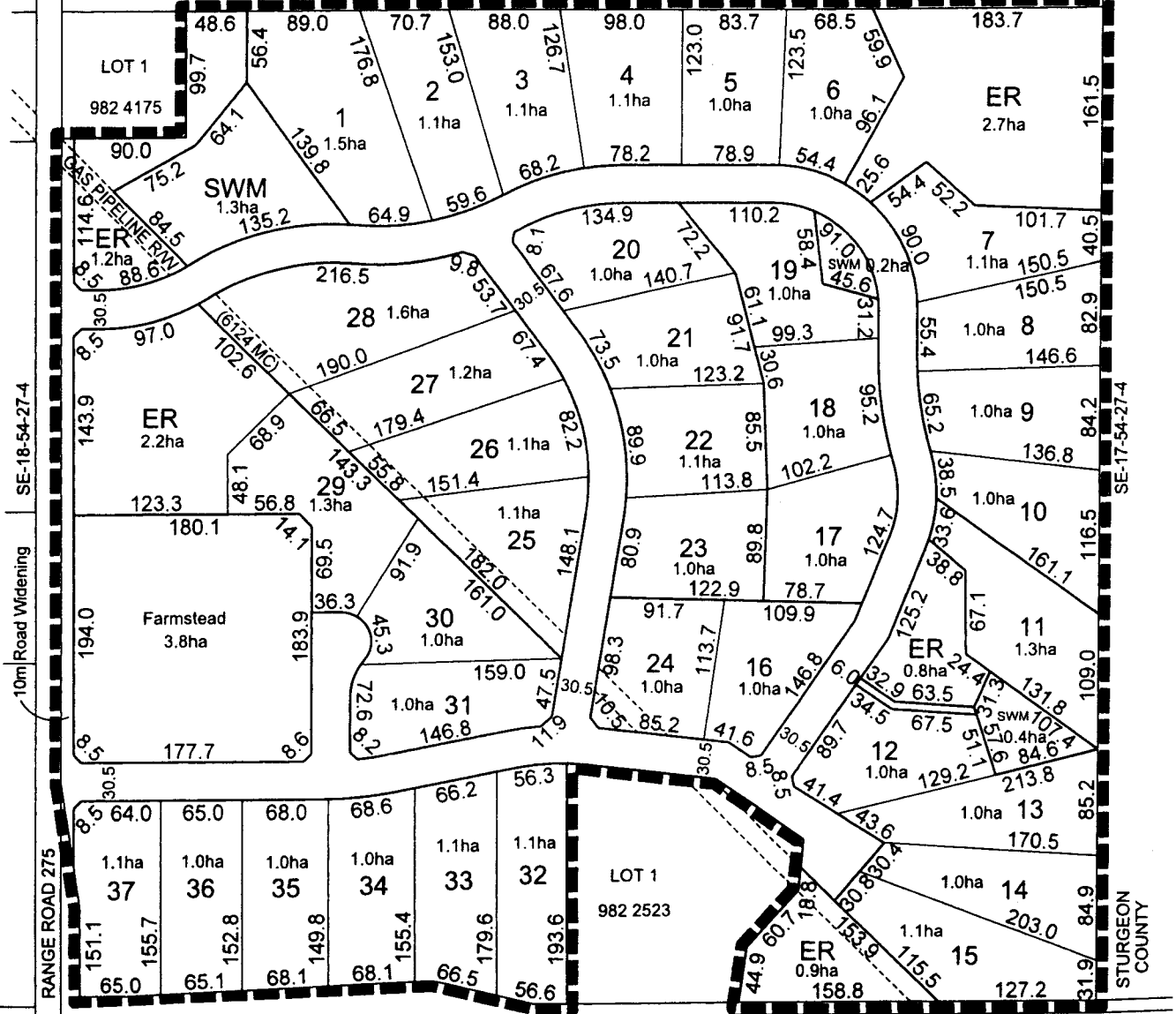


NW-17-54-27-4



SECONDARY ROAD 633

SW-8-54-27-4

PARKLAND COUNTY

PROPOSED SUBDIVISION VICTORIAN RIDGE

SW 1/4 Sec 17 - 54 - 27 - 4
STURGEON COUNTY

SUBDIVISION BOUNDARY CONTAINING APPROX. 61.3ha
AND 37 RESIDENTIAL LOTS & 5 E.R. LOTS

Scale 1:5000
December 1, 2009
6400100s3.dgn



Scheffer Andrew Ltd.
Planners & Engineers

